



Product Management: Pascal Kuhn



BAVARIA VIDA 33

1 Highlights

2 Open - Hardtop

3 Deck & Cockpit

4 Outboards

5 Interior

BAVARIA VIDA 33

1 Highlights

2 Open - Hardtop

3 Deck & Cockpit

4 Outboards

5 Interior

Highlights

BAVARIA VIDA 33



VIDA 33 HT - White

Highlights

BAVARIA VIDA 33

- New product line featuring first BAVARIA daycruiser with outboard engines
- BAVARIA VIDA 33 as OPEN and BAVARIA VIDA 33 HT as HARDTOP version
- Modern and strong design combined with functional details and customizing
- Two different decks layouts – forward sunpad or seating area with lowerable coffee table
- Huge adaptable cockpit allowing seating, dining and lounging for up to 8 guests
- Hardtop with forward and aft sliding softtop in standard
- Optimized hull design for reduced drag and maximum speed at low consumption
- Hydraulic bathing platform for access to the sea
- Bow cabin as couchette with separate head

Highlights

BAVARIA VIDA 33

- Mercury outboard engines from 150 HP up to 300 HP
- Hardtop in standard white or dark carbon grey
- Forward sunpad or seating area with lowerable table for foredeck lounge
- L-shape cockpit bench with optional lowerable table and lounge cushions
- Sliding aft bench with folding backrest
- Integrated door for access to foredeck
- Separate bow locker and access to technical compartment via cockpit hatches
- Ergonomic helmstand with 2 x 9" or 2 x 12" multi function displays
- Wetbar with fridge, ceran grill, gas cook top, washing basin and stowage
- Standard winglets or hydraulic lowerable bathing platform
- Wide companion way with transparent sliding door
- New cockpit cushion design and choices combined with optional hull vinyl wrapping

Highlights

BAVARIA VIDA 33

	<i>OPEN</i>	<i>HT</i>
Length overall incl. bathing platform	11,08 m	11,08 m
Length hull	11,03 m	11,03 m
Beam overall	3,43 m	3,43 m
Draught, drive raised (approx.)	0,61 m	0,61 m
Draught, drive lowered (approx.)	0,94 m	0,94 m
Fuel tank (approx.)	2 x 350 L	2 x 350 L
Water tank (approx.)	200 L	200 L
Cabins - Bathrooms	1/1	1/1
Berths	2	2
CE category	B - 8 / C - 10	B - 8 / C - 10

Highlights

BAVARIA VIDA 33



VIDA 33 HT – Dark Carbon Grey

BAVARIA VIDA 33

1 Highlights

2 Open - Hardtop

3 Deck & Cockpit

4 Outboards

5 Interior

Open - Hardtop

BAVARIA VIDA 33 - Open



- Featuring forward sunpad with integrated bow cabin hatch
→ Free choice of foredeck with open/hardtop

- Open version with convertible cockpit and side screens with integrated railing
- Standard GRP winglets aft with anti-slip surface
→ Free choice of bathing platform with open/hardtop

Open - Hardtop

BAVARIA VIDA 33 HT - White



- Featuring forward seating for up to 6 guests
 - Coffee table, lowerable with infill cushion for foredeck lounge
- Free choice of foredeck with open/hardtop

- Ergonomic hardtop design with integrated forward and aft sliding softtop
 - Hydraulic lowerable comfort bathing platform with integrated, retractable swimming ladder and foldout stairs
- Free choice of bathing platform with open/hardtop

Open - Hardtop

BAVARIA VIDA 33 HT – Dark Carbon Grey



- Hardtop design in standard white or optional dark carbon grey

BAVARIA VIDA 33

1 Highlights

2 Open - Hardtop

3 Deck & Cockpit

4 Outboards

5 Interior

Deck & Cockpit

BAVARIA VIDA 33 HT



Deck & Cockpit

BAVARIA VIDA 33 – “Seating”



- L-shaped cockpit seating for up to 8 guests
- Standard winglets or lowerable bathing platform
- Bow anchor locker
- Access to technical compartment via aft and central hatch
- Wide sliding, acrylic companion way
- Wetbar with washing basin, cooking and 80 L fridge
- Ergonomic helmstand with maximum visibility
- Three driver and co pilot seats with armrests and folding elevation
- Access to foredeck via door in windscreen
- Anti-slip surfaces or optional teak or Esthec deck covering

Deck & Cockpit

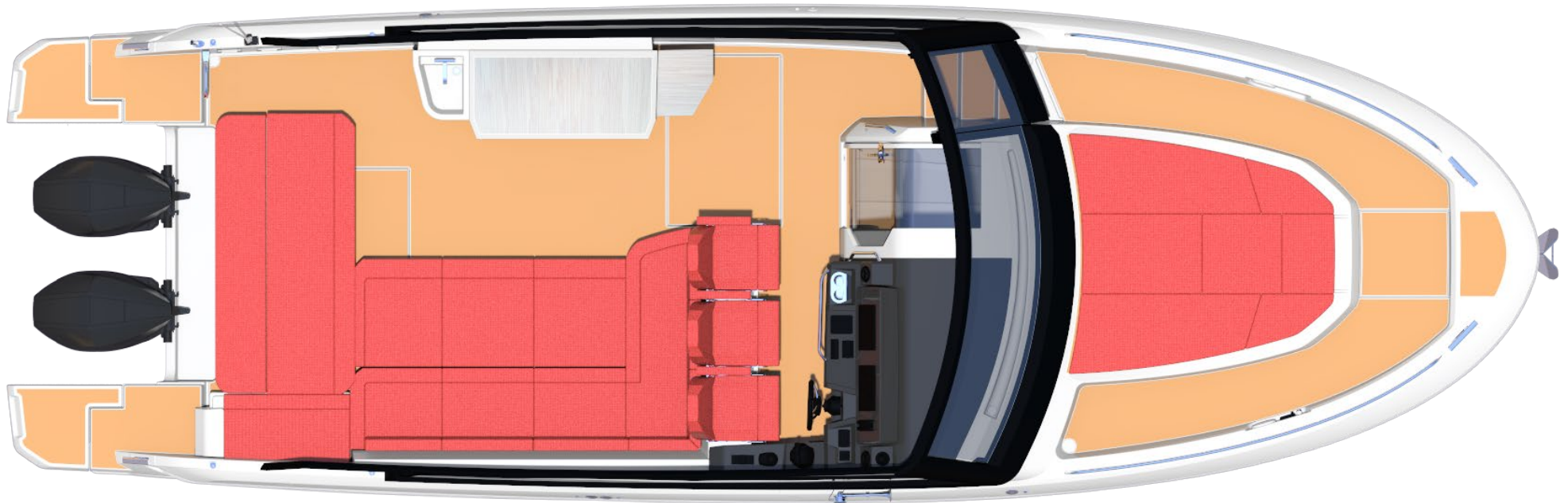
BAVARIA VIDA 33 – “Dining”



- Foldable dining table – with stainless steel telescopic twin foot, handrail and cupholders

Deck & Cockpit

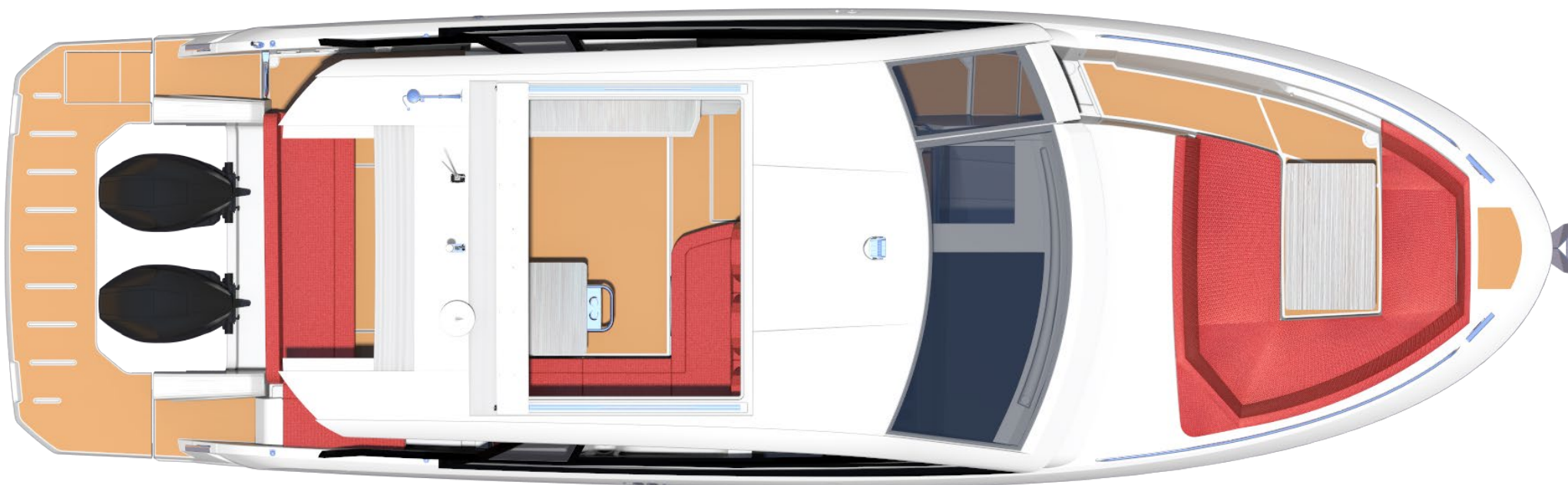
BAVARIA VIDA 33 – “Lounge”



- Lowered dining table – huge lounge by additional infill cushions
- Aft bench with integrated stowage – sliding forward with foldable backrest

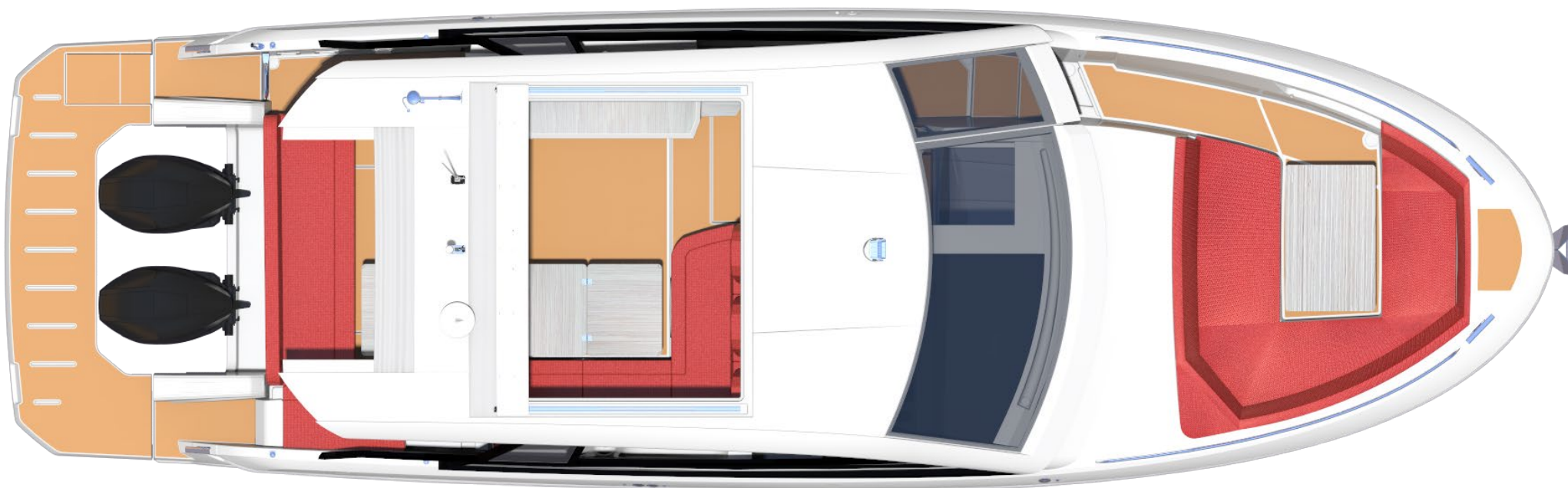
Deck & Cockpit

BAVARIA VIDA 33 HT – “Seating”



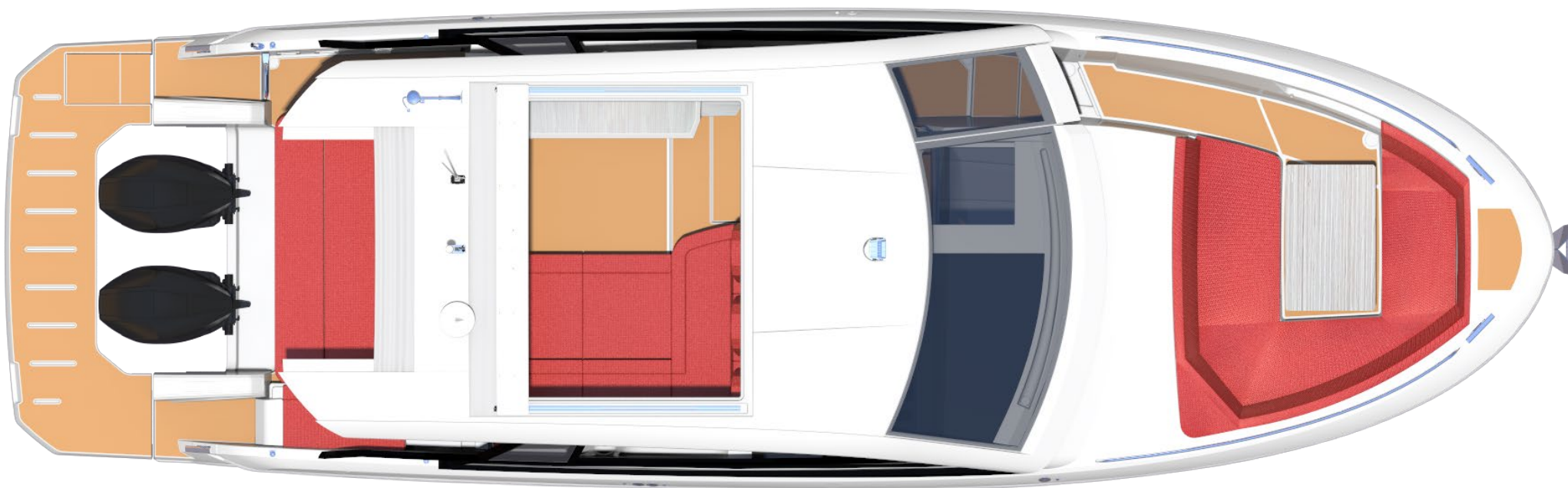
Deck & Cockpit

BAVARIA VIDA 33 HT – “Dining”



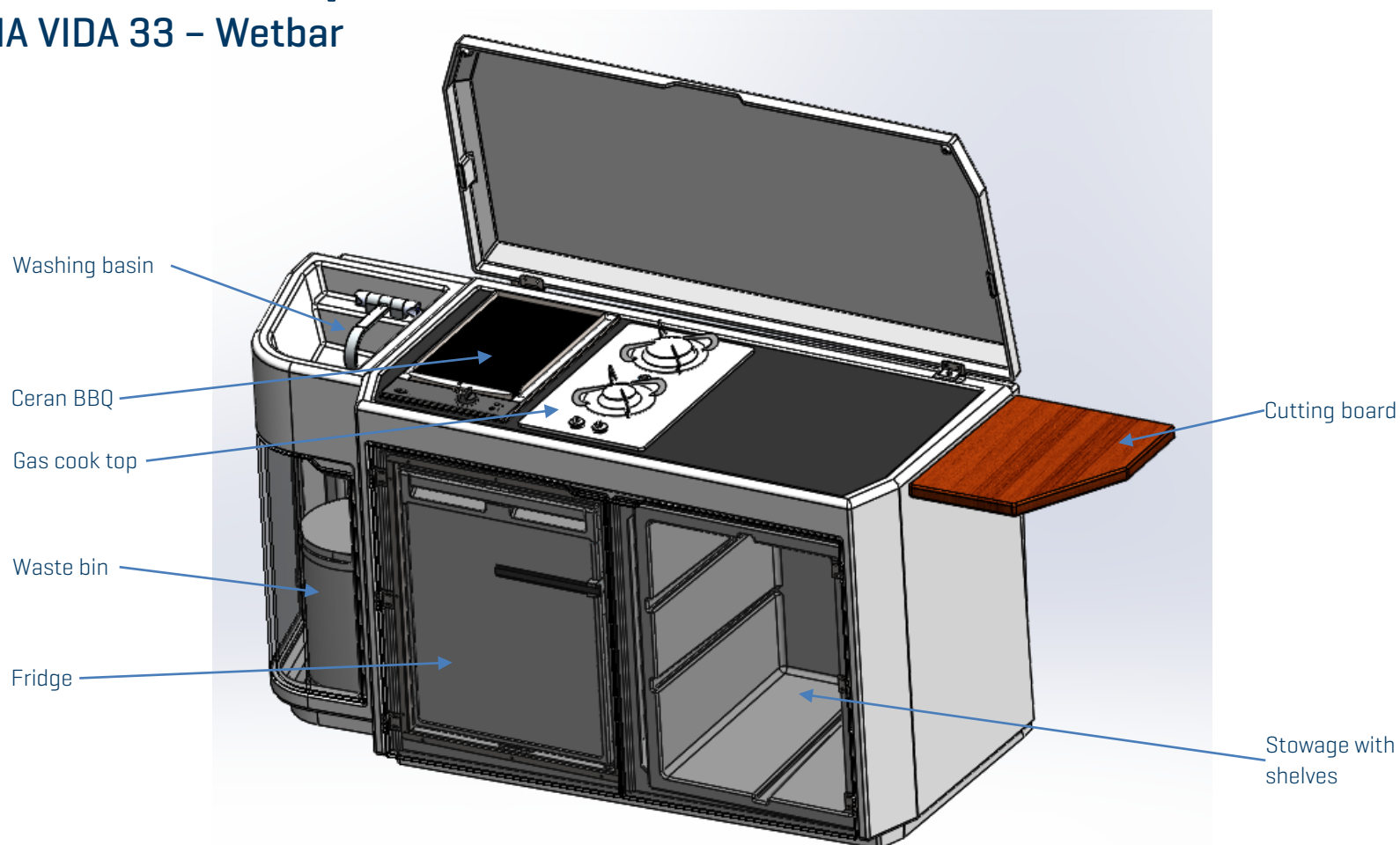
Deck & Cockpit

BAVARIA VIDA 33 HT – “Lounge”



Deck & Cockpit

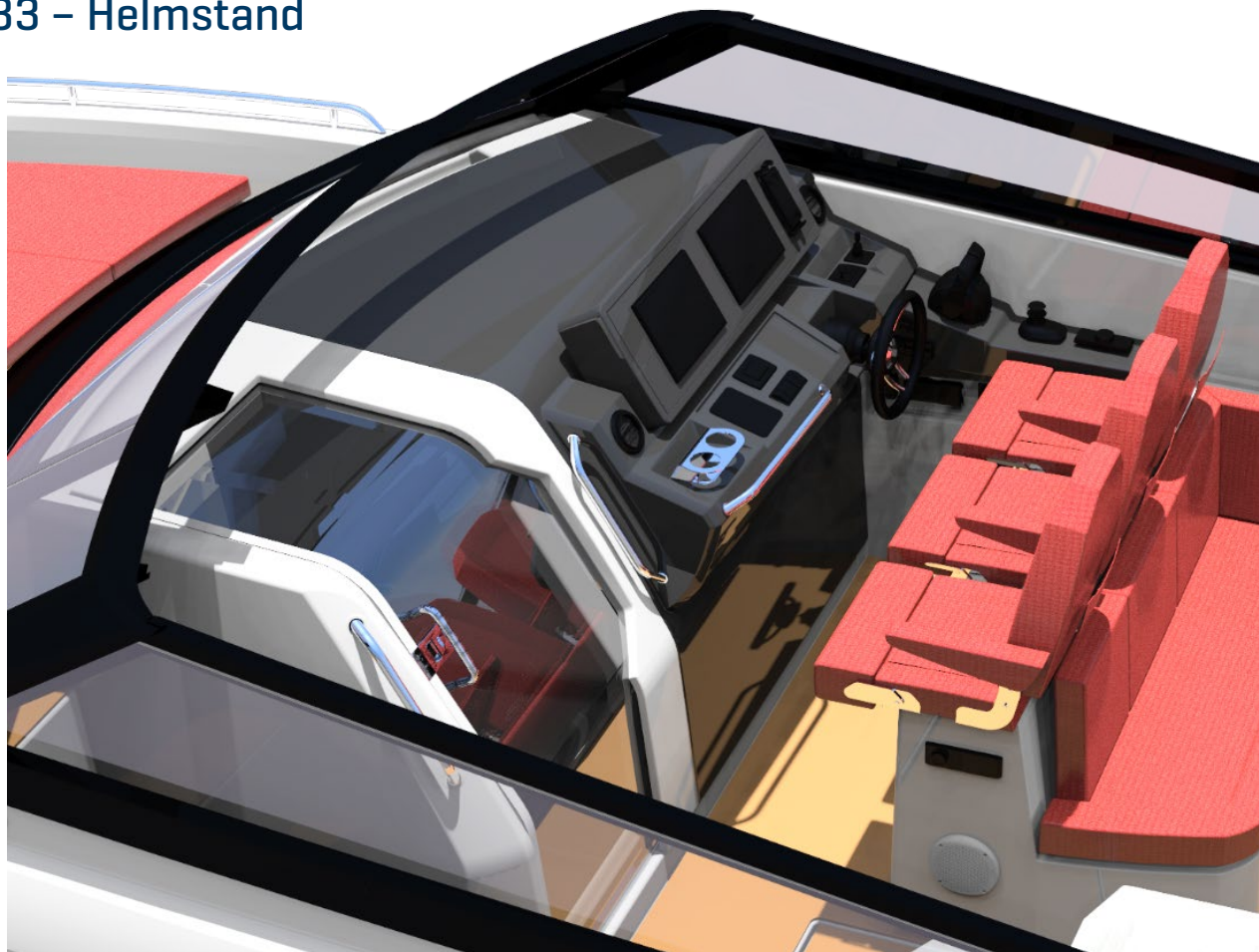
BAVARIA VIDA 33 – Wetbar



- Optional wetbar with modern dark worktop, wood covering and integrated washing basin
- Electric ceran grill and additional gas cooktop
- Huge stowage for food and galley equipment
- Optional 80 L fridge for cool drinks
- Waste bin with easy access
- Additional 35 L drawer fridge integrated in cockpit bench
- Integrated board for food preparation

Deck & Cockpit

BAVARIA VIDA 33 – Helmstand



- Helmstand with sport steering wheel
- 2 x 9" Simrad NSS evo3S multifunction display – to be upgraded to 12" – with optional OP50 remote control
- Airconditioning outlets at helmstand
- Control of all main functions:
12 V subpanel, engine throttle/joystick, wiper- and trim control, bow thruster, compass, heating/air conditioning and wireless phone charger with USB sockets

Deck & Cockpit

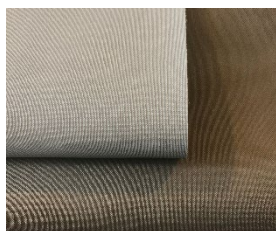
BAVARIA VIDA 33 – Cockpit cushions

- Temporary design with various material and colour choices featuring double diamond stitching

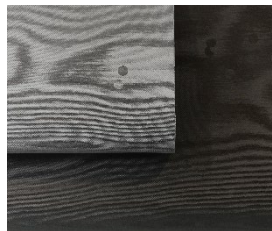
Standard two tone vinyl



Ice / Macadamia



Macadamia / Shitake



Titan / Carbon

Upgrade leatherette with double diamond stitching



Lava



Tangerine



Pastel

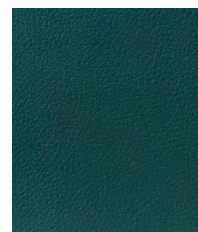


Sapphire

Upgrade leather with double diamond stitching



Aura



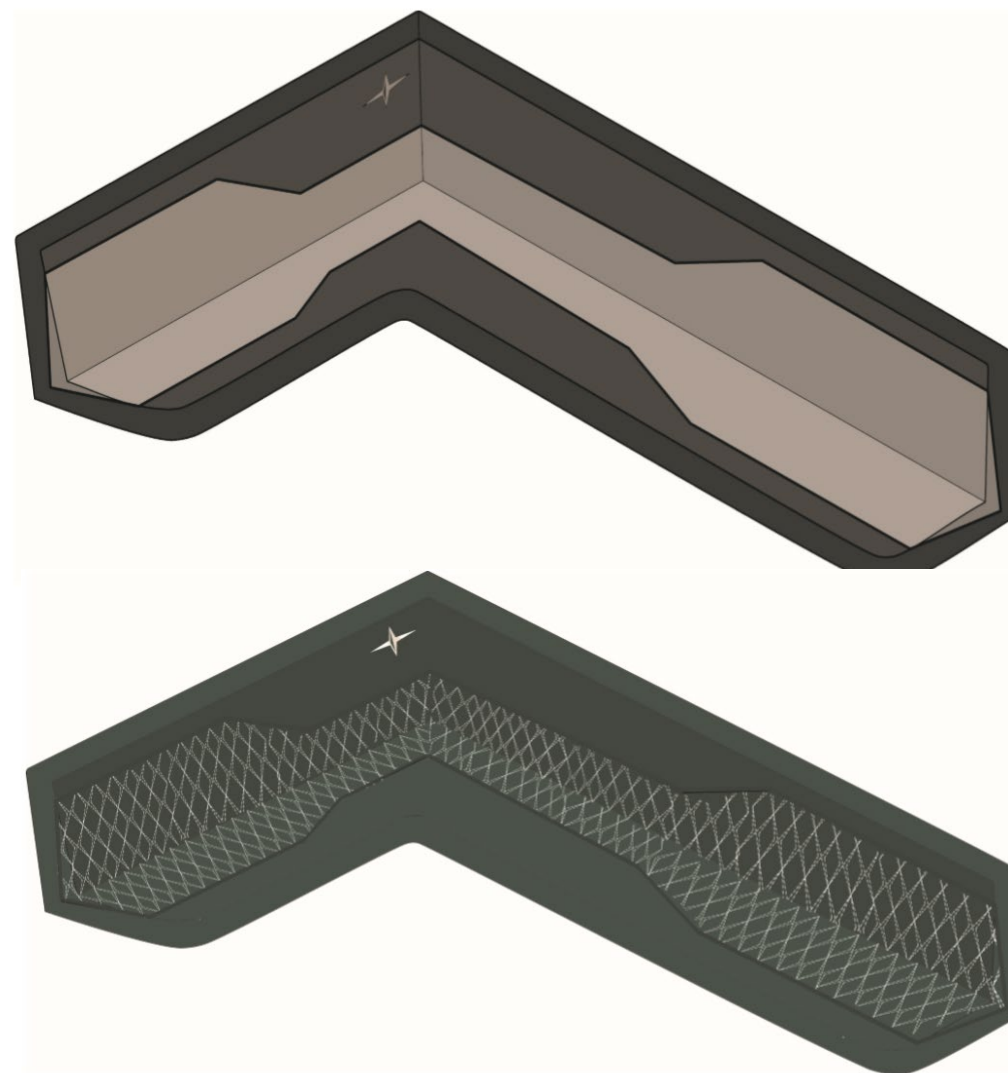
Sea Green



Red Clay



Marigold



BAVARIA VIDA 33

1 Highlights

2 Open - Hardtop

3 Deck & Cockpit

4 Outboards

5 Interior

Outboards

BAVARIA VIDA 33 – Engine portfolio

- Featuring Mercury outboard engines in black or white, optional with Axis joystick control:

FourStroke		150 HP	Black [Standard]
FourStroke	V6	200 HP	Black / White
Verado	V8	250 HP	Black / White
Verado	V8	300 HP	Black / White



BAVARIA VIDA 33

1 Highlights

2 Open - Hardtop

3 Deck & Cockpit

4 Outboards

5 Interior

Interior

BAVARIA VIDA 33 – Interior Layout

- Bow cabin as couchette with lowerable table for lower deck lounge
- Separate head with optional electrical toilet, washing basin and shower
- Chart station at companion way with main panel, VHF and boat control panels

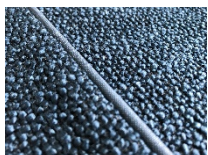


Interior

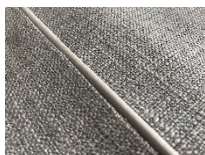
BAVARIA VIDA 33 – Interior Layout

- Various material and colour choices for interior cushions

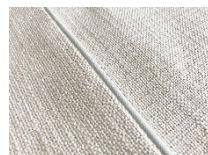
Standard



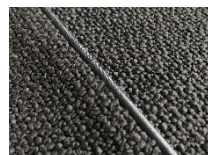
Marine



Melange



Natural



Pepple

Upgrade leatherette



Grey



Oyster

Upgrade leather



Ivory



Chocolate